

# TEACHERS & WRITERS

November-December 2005, Volume 37 Number 2

this purpose, the oscillation passing into the electric standard C, which by a seconds pendulum the arms the use road

## AND

**Chili**; near the equator it is 15,000 feet, and in the Bolivian A. (Lat. 21° S.) 17,000 ft. above the sea. The potato is cultivated at an elevation of 9,800 to 13,000 ft.; wheat grows luxuriantly at 10,000 feet, and oats ripen in the vicinity of Lake Titicaca at an elevation of 12,795 feet.

**Andrew**, (St.), the apostle, b. at Bethsaida, in Galilee, brother of St. Peter, and the first disciple whom Christ chose. His fate, after Christ's death, is uncertain, though it is believed that he was executed on an oblique cross, like that which bears his name. — *Orders of St. Andrew*. Two orders of knighthood are of this name: — one in Russia, founded by Peter the Great, 1698, is the highest in rank of that empire; — the other in Scotland, is more commonly known as *The Order of the Thistle*, the thistle being the hereditary badge, and St. Andrew the patron saint. It was founded by James V., and Anne, 1703.

**Andrew's**, (St.), on the E. coast of Scotland, m. N.N.E. of Edinburgh, in 1411, the oldest in

**Andria**, (an-dre-ah), of Barietta. Pop. 30,800

**Androgynous**, (an-dro-jin-us), nos, of both sexes, male flowers on the combination. — (Zoo.) possess a distinct male and female on the same individual, as in

**Andromeda**, (an-drom-e-dah), Cepheus, king of Ethiopia, rescued from a sea-monster formed into a constellation in the northern constellations, the name of a woman chained by the triple star Gamma Andromedae gen. of beautiful, hardy cactae, belonging generally to

**Andronicus I.**, (an-dro-ni-cus), of Constantinople, b. 1115, v. Having been appointed regent by Alexius II., he put that prince and usurped the throne, II. began to exterminate the whole male rose in his descent. II., *Palaeologus*, M. ; s. 1283; d. by his grand

**Anardina**, (an-dro-po-gin-ah), (Bot.) A Gramineae containing a lemon-grass, which yields a scented essential oil; *A. Canadensis*, the cane of Scribn. and

**Anchusa**, (an-ku-shah), (Bot.) A Boraginaceae, the blue-flowered plant, the

**Anemone**, (an-e-mo-nay), (Bot.) Anemones, the wind, and metron, a unit, indicating, measuring, and velocity of the wind; from the supposed pronunciation when the wind blows. (Bot.) Anemoneaceae, mostly in gardens for the flowers. The most showy is the *Anemone pulsatilla*. Many are annuals. (Fr.) *Anemones*, the wind, and *skolion*, (Meteor.) showing from a quarter the wind

**Anero**, (an-er-o), (Astr.) [L. *anero*, without spirit, and *metron*, measure.] A barometer without the spirit.

**Anemometer**, (an-e-mo-mi-ter), (Astr.) [L. *anemo*, wind, and *metron*, measure.] A barometer without the spirit.

**Angelus Domini**, (an-jel-us don'e-ne), (L., Angel of the Lord.) (Ecc. Hist.) A prayer of the Roman Catholic Church, embodying a passage in Scripture beginning with those words. It was ordered by

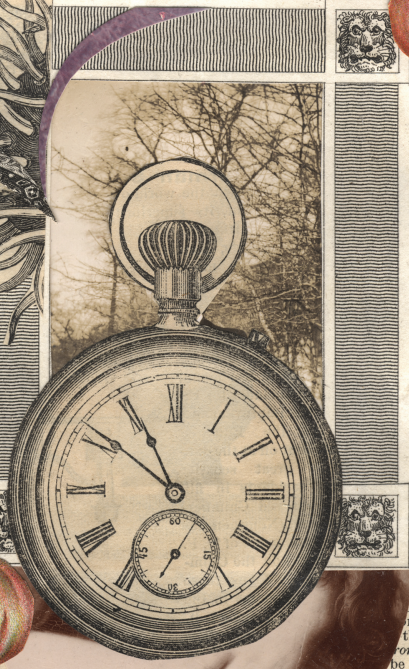


Fig. 27. CA ARCHANGELICA.

confluence with the 1,797. (strangle.) (Med.) of the throat. Also, is the heart, which is hence called *A. iety*, and a sense of

(us.) [Gr. *aggeion*, a Applied to such in a seed-vessel.

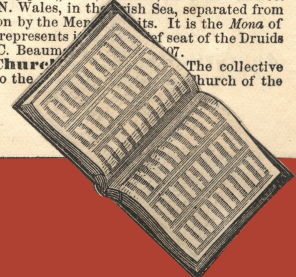
ner.] (Geom.) The planes, joining in a *A.* forming it meet *A.* and is of 90°; and when larger then two circles in like what is called *A.* are termed *solid A.* by the lines made of *Direction*, that ins of two conspiring the angular altitude e of the horizon. — intersection of two prominent part of margin of the upper ce of the ear-passage y. — *A. of Incidence*, falling upon a re- endicular raised on int of the ray. The th the *A. of Reflec* the *A.* formed at the on of two circles, one the other the vernal ron.) The *A.* made by be drawn from a celest- he actually stands, and hich its motion is referred or the centre of the terres- t.) The *A.* formed by bi-linear on the extreme points of an ob- the eye.

See PEDICULATI.

**Angles**, (ang'gl-eh), (Hist.) An ancient German nation, who, joining their powerful northern neighbors, the Saxons, made, under the name of Anglo-Saxons, several descents into the southeastern part of Britain, which, from them, was afterwards called England; settling there, they eventually extended their sway over almost the entire country, where they introduced their language, which is the basis of the present English.

**Anglesey**, (ang'gl-se), or ANGLESEA, an island and co. of England, N. Wales, in the Irish Sea, separated from Caernarvon by the Mersey. It is the *Mona* of Ptolemy, and the seat of the Druids.

**Anglican Church**, (ang'li-kan), (Hist.) The collective name given to the Church of the



## CONTRIBUTORS



**About the Artist:** Star Black is a photojournalist and collage artist operating out of her mid-Manhattan home. She is co-founder of the popular poetry reading series at the KGB Bar in New York's East Village, and the author of five books of poems, among them *Ghostwood* and *Balefire*.

**Erick Gordon** is the founding director of Student Press Initiative. He comes from a background in small press publication that later led to classroom teaching, first in Northern California and then New York City. In 2002 he joined the faculty of the English Education Program at Teachers College, Columbia University, where he concurrently heads up SPI.

**Amanda Leigh Lichtenstein** writes poetry and creative nonfiction. She recently completed her Masters degree in Arts in Education at the Harvard Graduate School of Education, and currently lives in Chicago.

**Kerry McKibbin** currently works as a literacy coach in The National Academy for Excellent Teaching (NAFET) at Teachers College, Columbia University. Innovative curriculum developed by Ms. McKibbin and SPI is included in SPI's new curriculum series, Project Notes. Visit [www.publishspi.org](http://www.publishspi.org) for more information.

**Christian McEwen** was born in London and grew up in the Borders of Scotland. She is the editor of four anthologies, including *The Alphabet of the Trees: A Guide to Nature Writing* (T&W Books, 2000), which she co-edited with Mark Statman. McEwen is the author of the poetry collection *In the Wake of Home* (Meadowlark Press, 2004) and producer of a video-documentary, *Tomboys!*, which is distributed by Women Make Movies in New York. She teaches for Lesley University, and divides her time between Scotland and Vermont.

Front cover image: Star Black

Visit our online bookstore

[www.twc.org/pubs](http://www.twc.org/pubs)

# Educate the Imagination with T&W Books

visit [www.twc.org/pubs](http://www.twc.org/pubs) or call 1-888-BOOKS-TW



New edition

**Copyright © 2005** by Teachers & Writers Collaborative, Inc. *Teachers & Writers Magazine* is published five times per year by Teachers & Writers Collaborative, 5 Union Square West, New York, NY 10003-3306. Telephone: (212) 691-6590 or toll-free (888) BOOKS-TW. Fax (for institutional purchase orders only): (212) 675-0171. Institutional subscription rate (for schools, universities, and libraries): \$40/5 issues. Individual subscription rate: \$20/5 issues. For additional information, contact the Publications Associate at [books@twc.org](mailto:books@twc.org).

**Edited and designed by:** Christopher Edgar and Susan Karwoska. **Printed by:** The Covington Group, Kansas City, Missouri. ISSN 0739-0084. This publication is available on microfilm from University Microfilms International, 300 North Zeeb Road, Ann Arbor, Michigan 48106. Teachers & Writers Collaborative is a Partner of the Library of Congress.

**Teachers & Writers Collaborative Staff:** Amy Swauger, Director; Bruce Morrow, Associate Director; Barbara Jade Triton, Director of Operations; Jeffrey Rosales, Program Director; Parker Balderston, Program Associate; Christopher Edgar, Senior Editor; Sarah Lynn Pace, Publications Associate; Irwin Gonshak, Radio Producer; Daniel Kane, WriteNet Coordinator.

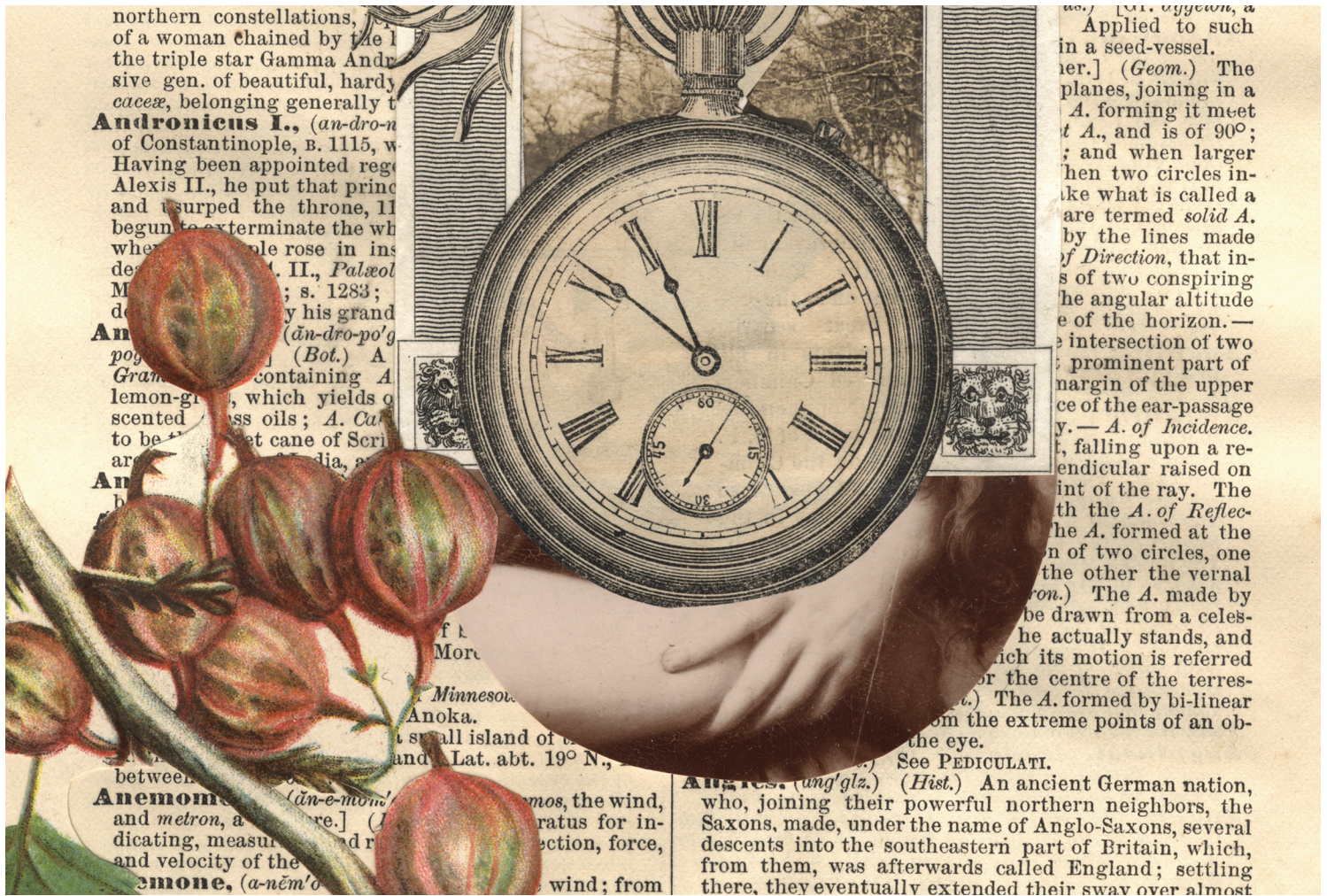
**Board of Directors:** Wesley Brown, Norm Fruchter, Colin Greer, Simon Kilmurry, Herbert Kohl, Bernard Levine, Phillip Lopate, Walter Dean Myers, Ron Padgett, David Rogers, Marly Rusoff, Steven Schrader, Robert Silvers, and Carmen Valle.

**T&W Writers in Residencies:** Grisel Acosta, Frank Algarín, Zeldá Alpern, Yasmin Alwan, Allison Amend, Wendy Becker, Madeleine Beckman, Johanna Bermudez, Olivia Birdsall, Chris Brandt, Matthew Burgess, Phyllis Cappello, Andy Clausen, Ambica Cooper, Patsy Cooper, Jorge Cortina, Cynthia Cruz, Yasmin Dalisay, Frank Damico, Shea Dean, Matt De la Peña, Rachel De Woskin, Sarah Dohrmann, Lynne Elson, Alvin Eng, Sandra Maria Esteves, Phebus Etienne, Patricia Farewell, Corie Feiner, Mariposa Fernandez, Federico Fraguada, Joanna Fuhrman, Benjamin Gantcher, Peggy Garrison, Sasha Ginnetti, Melanie Maria Goodreaux, Leonore Gordon, Andrea Greene, Ann Greene, Alba Hernández, Nicole Hefner, David Hollander, Susan Hoover, Vicki Hudspeth, Frank Ingrasciotta, Dave Johnson, Stephen M. Joseph, Dean Kostos, Ramiza Koya, Tamar Kupiec, Jane Hohenberger LeCroy, Sarah McCarthy, Renee McRae, Sheila Maldonado, Alisa Malinovich, Sherry Mason, Maaza Mengiste, George Lee Miles, Rosemary Moore, Linda Morel, Martha Otis, Abiodun Oyewole, Phillip Pardi, Gregory Pardlo, Margaret Parker, Francisco Perez, Elizabeth Pressman, Emily Raboteau, Raymond Ramirez, Bushra Rehman, Samuel Reynolds, Carmen Rivera, Jenny Robinson-Hartley, Bertha Rogers, Nellie Rosario, Clara Sala, Colette Samman, Ilka Scobie, Margie Ann Stanko, Mark Statman, David Stoler, Rachelle Street, Tara Tandlich, Jim Tolan, Stacey Toro, Vincent Toro, Karen Ulrich, Mercer Warriner, J. Kathleen White, Zoë Ryder White, Susan Willerman, Meredith Sue Willis, Gia Rae Winsryg-Ulmer, Linda Winston, Sarah Wolff, Dale Worsley, Beth Zasloff, and Jie-Song Zhang.

**T&W Funders:** Teachers & Writers programs are made possible in part by grants from the National Endowment for the Arts, the New York State Council on the Arts, the New York City Department of Cultural Affairs, and the Manhattan City Council Delegation. Teachers & Writers Collaborative is especially grateful to The Cerimon Fund for generous support of the magazine. We would also like to thank the following foundations, corporations, and individuals: Anonymous, Axe-Houghton Foundation, The Bydale Foundation, Carnegie Corporation of New York, Con Edison, Dry Family Foundation, E.H.A. Foundation, Agnes Gund & Daniel Shapiro, Janus Foundation, Lee & Low Books, M&O Foundation, J. P. Morgan Chase Foundation, NBC, New York Times Company Foundation, Partners for Arts Education, David Rockefeller Fund, Rush Philanthropic Arts Foundation, Scheide Fund, Select Equity Group Foundation, Smith Barney (Citigroup Foundation), The Steele-Reese Foundation, Tin Man Fund, Verizon Foundation, and Yahoo!.

A special thanks to recent contributors to The T&W Writers' Fund: Holly Ewald, Carolyn & Tim Halpin-Healy, Stephen M. Joseph, Grace Paley, Martin Skoble, and Alison Wylegala. The T&W Writers' Fund was established in honor of former T&W director Nancy Larson Shapiro. For information on making a donation, please contact Bruce Morrow at (212) 691-6590 or [info@twc.org](mailto:info@twc.org).





**Teachers & Writers Collaborative**

5 Union Square West, New York, NY 10003-3306

Address Service Requested

NON-PROFIT ORG.

U. S. POSTAGE

**PAID**

Consolidated  
Mailing Corp.